

PM-60
Pulse Oximeter

Technical Specifications

Safety
Meet the requirements of IEC60601 series, CE marking according to MDD93/42/EEC

Type of Protection Class II with internal electric power supply
Degree of Protection BF (defibrillation proof)
Protection Against Ingress of Liquid: IPX2

Dimension and Weight
Dimension 55(W)X120(H)X30(D)mm
Weight Maximum weight 300g (With battery)

Operation Environment
Temperature 0~40°C
Humidity 15~95%(non-condensing)

Storage Environment
Temperature -20°C ~ +60°C
Humidity 10% ~ 95% (Non-condensing)

Performance Specifications
Display 2.4" color TFT
Resolution 320×240
Multi displays selectable Standard screen display
Waveform display
Trace 1 plethysmogram waveform
Indicator Alarm indicator light
Power indicator light
Pulse tone
Alarm sound
Button tones
Interface One dual-purpose socket for connecting SpO2 sensor and communication cable.
IR interface Infrared link allows downloading realtime patient data to computer
Charger stand for Li-ion battery
DC Power interface Input voltage 5V DC
DC Power Requirements Power 1.2A
Battery Li-ion Battery
2 hours for charging;24 hours for continuous working

Order Information

Part Number	Description
0852B-01000	Main unit (with standard reusable sensor)
0852-10-77701	Carrying case
0852-21-77412-53	Protective cover
0852-30-77503	Battery charging kit (Euro)
0852-30-77504	Battery charging kit (US)
0852-30-77505	Battery charging kit (UK)
0852-30-77531	Pole mounting kit
0852-30-77491	Data management kit

Partial list of choices, for more details please refer to the price list.

AA batteries (for 3 pieces)36 hours for continuous working
Monitoring mode
Resolution: 2s
Maximum time: 96h
Spot-Check mode
Review of up to 4,000 data;
measure up to 99 patients
User-adjustable High and Low limits
3-level audible and visual alarm

Trend memory
Alarm

SpO2
Measurement range 0~100%
Resolution 1%
Accuracy ±2%(70~100%,Adult/Pediatric)
±3%(70~100%,Neonate)
0~69% unspecified
Alarm range 50~100%
Refreshing rate 1 s
Averaging time 7 s (Sensitivity set HIGH)
9 s (Sensitivity set MED)
11 s (Sensitivity set LOW)

Pulse Rate
Range 18~300bpm
Resolution 1bpm
Accuracy ±3bpm(non-motion)
±5bpm(motion)
Alarm range 18~300bpm
Refreshing rate 1 s
Averaging time 7 s (Sensitivity set HIGH)
9 s (Sensitivity set MED)
11 s (Sensitivity set LOW)

Selectable Sensors

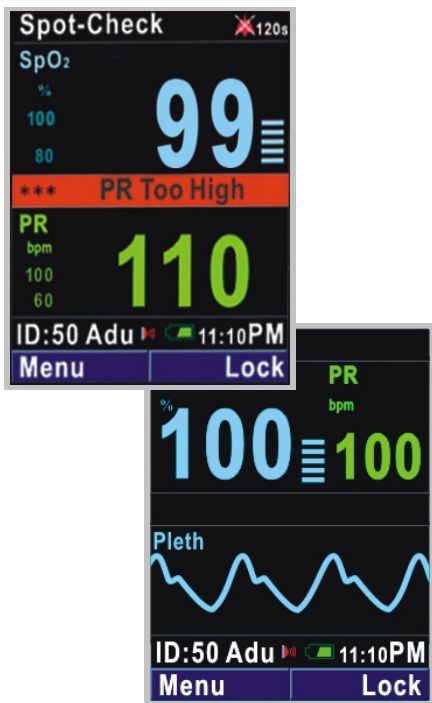


PM-60
Pulse Oximeter



Medguard Professional Healthcare
Tel: +353 (0) 1 835 2411
Email: sales@medguard.ie
Fax: 01 969 5009
Website: www.medguard.ie
Unit 6/7, Block 4, Ashbourne Business Park, Ashbourne, Co. Meath, A84 VK52



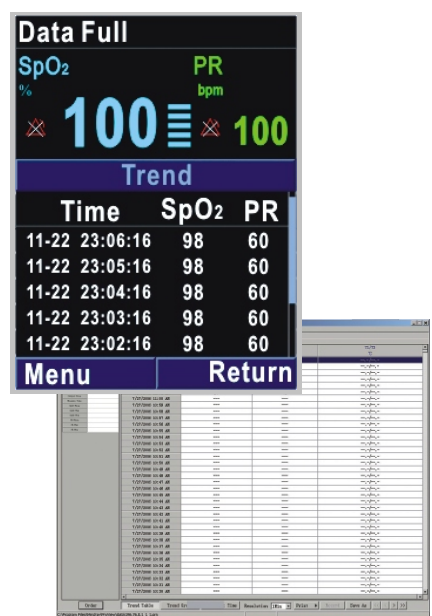


Spot Check Mode

- Auto-standby and power off during the idle status
- Auto-increase the patient IDs
- Non-alarm setting for "sensor off" occasion

Continuous Monitoring Mode

- Regular alarm handling
- Enable to input patient ID manually
- View SpO₂ waveform



Data Storage and Management Functions

For you to easily keep and view patient data.

- Spot check: 1~99 IDs with total 4000 sets of measurement
- Continuous monitoring: maximum 96 hour trend

All data can be transferred to a PC through a Windows-based software for review and regular printing.

- Suitable for adult, pediatric and neonatal patients
- High resolution 2.4" color LCD display
- Two selectable working modes: spot check and continuous monitoring
- Adjustable audible and visual alarms
- Real time data transfer by infrared technology
- Batteries to support up to 36 hour continuous working
- Protective cover and carrying case perfect for portable monitoring needs



Alarm light indicator

Slot for hanging strap

2.4" Color LCD

Navigating buttons for interface operation

Infrared transmission port

Indicator of charging and working status



Protective Cover



Carrying Case



Charger Stand