

Ambulatory Blood Pressure Monitor

TM-2430

Clinically
Validated



- 24 hour ambulatory blood pressure monitoring
- Light weight & compact size
- Oscillometric measuring method
- Battery Power (3 alkaline or Ni-Cd/Ni-MH "AA")
- Data output to computer or printer
- RS-232C Connectivity

Doctor Pro3 *Blood Pressure Analysis Software*

- Setting up all the parameters
- Various formats of graphs for further diagnoses
 - ◆ Trend
 - ◆ Correlation
 - ◆ Histograms
 - ◆ Circadian rhythm analysis
 - ◆ Hyperbolic index analysis



| Time | SYS | DIAS | PULSE |
|----------|-----|------|-------|
| 00:00:00 | 110 | 70 | 70 |
| 00:05:00 | 115 | 75 | 75 |
| 00:10:00 | 120 | 80 | 80 |
| 00:15:00 | 118 | 78 | 78 |
| 00:20:00 | 112 | 72 | 72 |
| 00:25:00 | 110 | 70 | 70 |
| 00:30:00 | 115 | 75 | 75 |
| 00:35:00 | 120 | 80 | 80 |
| 00:40:00 | 118 | 78 | 78 |
| 00:45:00 | 112 | 72 | 72 |
| 00:50:00 | 110 | 70 | 70 |
| 00:55:00 | 115 | 75 | 75 |
| 01:00:00 | 120 | 80 | 80 |



Ambulatory Blood Pressure Monitor TM-2430

The TM-2430 is a compact & lightweight ambulatory blood pressure monitor that incorporates our latest technology gained from over 20 years of manufacturing ambulatory BPMs. This monitor was validated in accordance with British Hypertension Society protocol and accuracy was proven to be A/A. Weighing only 215 grams at the size of a cigarette pack, the TM-2430 can be carried by patients painlessly around-the-clock. Doctor Pro 3 Blood Pressure Analysis Software enables easy analysis of the data taken by the TM-2430, as well as parameter settings. (Optional)

■ **24 hour ambulatory blood pressure monitoring**

■ **Light weight & compact size**

■ **Oscillometric measuring method**

■ **Battery power (3 alkaline or Ni-Cd/Ni-MH "AA")**

■ **Data output to computer or printer**

■ **RS-232C connectivity**

■ Automatically sets:

◆ Proper cuff pressure

◆ Exhaust speed

◆ End of measurement

■ New pulse correction algorithm for faster measurement & noise rejection

■ Automatic or manual measurement

■ Date/Time display: Until 2096 & auto leap year

■ Multiple measurement intervals - adapts to patient's exact requirements.

Specifications

| | | |
|------------------------|--------------------------|---|
| BP Measurement | | |
| Measurement Method | | Oscillometric |
| Measuring Range | Blood Pressure | 40 ~ 280 mmHg (SYS - 60 ~ 280mmHg/DIA - 40 ~ 160mmHg) |
| | Pulse | 30 ~ 200 bpm |
| Accuracy | Blood Pressure | ±3 mmHg |
| | Pulse | ±5 % |
| Pressurization | Method | Micro pump |
| | Maximum Pressure | 300 mmHg |
| | Preset Pressure | Automatic |
| Depressurization | Method | Electric Controlled Exhaust Valve (ECEV) |
| | Safety System | A magnetic, solenoid valve opens when the pressure exceeds approximately 320 mmHg. Over 330 mmHg, an independent safety circuit exhausts air. |
| Interval Setting | | 5, 10, 15, 20, 30, 60, 120 min. |
| Clock | | 24 hour clock, calendar (until 2096) |
| Memory Data | | Up to 300 sets of data |
| Power Supply | Battery | 3x LR6("AA") type batteries - alkaline or Ni-MH "AA" |
| | Battery Life | Approx. 200 measurements |
| Temperature & Humidity | Operating Temperatures | 10°C ~ 40°C (50°F ~ 104°F), Less than 85%RH (non-condensing) |
| | Storage & Transportation | -20°C ~ 55°C (14°F ~ 131°F), Less than 95%RH (non-condensing) |
| External Dimensions | | 72(W) x 27(H) x 100(D) mm/2.8(W) x 1.0(H) x 3.9(D) inches |
| Weight | | Approx. 215g (0.47lb) without cuff |

Options and Accessories

| | |
|--------------|------------------------------------|
| TM2430-02A | Large cuff for left arm (28-36cm) |
| TM2430-06A | Adult cuff for left arm (20-31cm) |
| TM2430-07A | Small cuff for left arm (15-22cm) |
| TM2430-09A | Adult cuff for right arm (20-31cm) |
| TM-CF306A | Disposable cuff (10pcs/Box) |
| Doctor Pro 3 | Blood pressure analysis software |

Doctor Pro 3

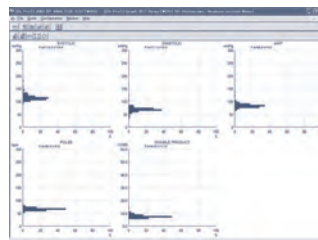
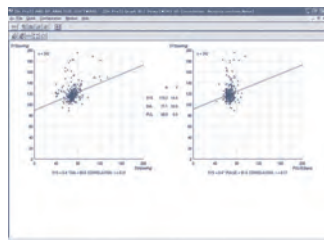
Blood Pressure Analysis Software (TM9501)

Doctor Pro 3 analysis software was designed to enhance diagnosing a patient's data taken by our ambulatory BP monitors (TM-2430) for further treatment. The following formats of graphs are available; Trend, Correlation, Histograms, Circadian Rhythm Analysis, and Hyperbolic Index (HBI or BP load) Analysis in addition to tabular data format. A file merge function is added to the latest version making closer analysis possible.

Also, the Doctor Pro 3 accepts UA-767PC data for long term diagnose.

TM-9501

Analysis software program



Doctor Pro 3 Hardware Requirements

| | |
|-----------|---|
| CPU | Pentium 4 1GHz or greater |
| RAM | Minimum 1GB (32bit), 2GB (64bit) |
| HDD | Minimum 1GB free space |
| Drive | CD-ROM drive |
| Interface | USB 2.0/1.1 |
| OS | Windows™ 8 (32bit/64bit), 7 (32bit/64bit), Vista (32bit/64bit), or XP (SP2) - .NET Framework 3.5 or greater - MDAC 2.6 or greater |

Windows™ is a registered trademark of Microsoft Corporation.

MEDGUARD®

Professional Healthcare Supplies

Medguard Professional Healthcare

Tel: +353 (0) 1 835 2411

Fax: +353 (0) 1 969 5009

Email: service@medguard.ie

Website: www.medguard.ie